

MODEL NO. 60026 Supermax Vertical Ladder

PARTS LIST

DESCRIPTION	No. REQ'D	PART NUMBER
Entrance Panel	2	301256
Step Panel	1	302573
Hardware Complete	1	302209
Flat Bracket	4	300980*
Panel Bracket	2	300984*
5" O.D. Pipe Clamp	2	302030*
1/4" x 3/4" Drive Rivet	2	168449*
3/8" Barrel Nut	18	804804*
3/8" Flat Washer	18	817410*
3/8" Heavy Hex Nut	2	804200*
3/8" x 1" P.B.H.C.S. w/Patch	4	812050*
3/8" x 1 1/2" P.B.H.C.S. w/Patch	2	812053*
3/8" x 3/4" P.B.H.C.S. w/Patch	18	812052*
3/8" Lock Nut	4	804353*
3/8" x 3/8" Set Screw	2	811549*
3/8" Flatwasher (1 1/4" O.D.)	8	817424*

*Unless Otherwise Specified, All Units of Measure are Each
Included in Hardware

Warning: Small parts and hardware items may present a potential choking hazard. Promptly remove all unused parts from play area.

SPECIFICATIONS:

Clamps are cast from a 356 high-strength aluminum alloy with a baked-on polyester powder-coated finish. Vertical Ladder Panel Bracket is fabricated from 10-gauge galvanized sheet stainless steel welded to 1-5/16" O.D. 14-gauge, galvanized steel tubing. The entire Bracket receives a baked-on polyester powder-coated finish. Vertical Ladder Flat Bracket is made from 11-gauge galvanized steel sheet. The bracket receives a baked-on polyester powder-coated finish. Panels are cut from a sheet of high-density .850" thick extruded solid polyethylene with color molded in and UV-stabilized.

All hardware is stainless steel.

Weight: 71 lbs. / 32.3 kg.

INSTALLATION INSTRUCTIONS:

NOTE: The Vertical Ladder HDPE is designed to accommodate the difference of 16" between decks. □

- Determine which deck is to receive the 16" Vertical Ladder. Refer to your overhead drawings for location.
- Attach the Flat Brackets to the Step Panel and attach assembly to the lower and upper deck using 3/8" x 1", 3/8" x 3/4" P.B.H.C.S. w/ Patch with 3/8" Flatwashers (1 1/4" O.D) and 3/8" Barrel Nuts.
- Attach the Vertical Ladder Entrance Panel Brackets to the Entrance Panels using 3/8" x 3/4" P.B.H.C.S. w/ Patch, 3/8" Flat Washers and 3/8" Barrel Nuts. Attach assembly to Step Panel and Posts using Pipe Clamps (Refer to Clamp Sub-assembly Sheet). Attach the lower end of the Entrance Panel to the Flat Brackets using 3/8" x 3/4" P.B.H.C.S. w/ Patch with 3/8" Flat Washers and 3/8" Barrel Nuts as shown in the assembly diagram.

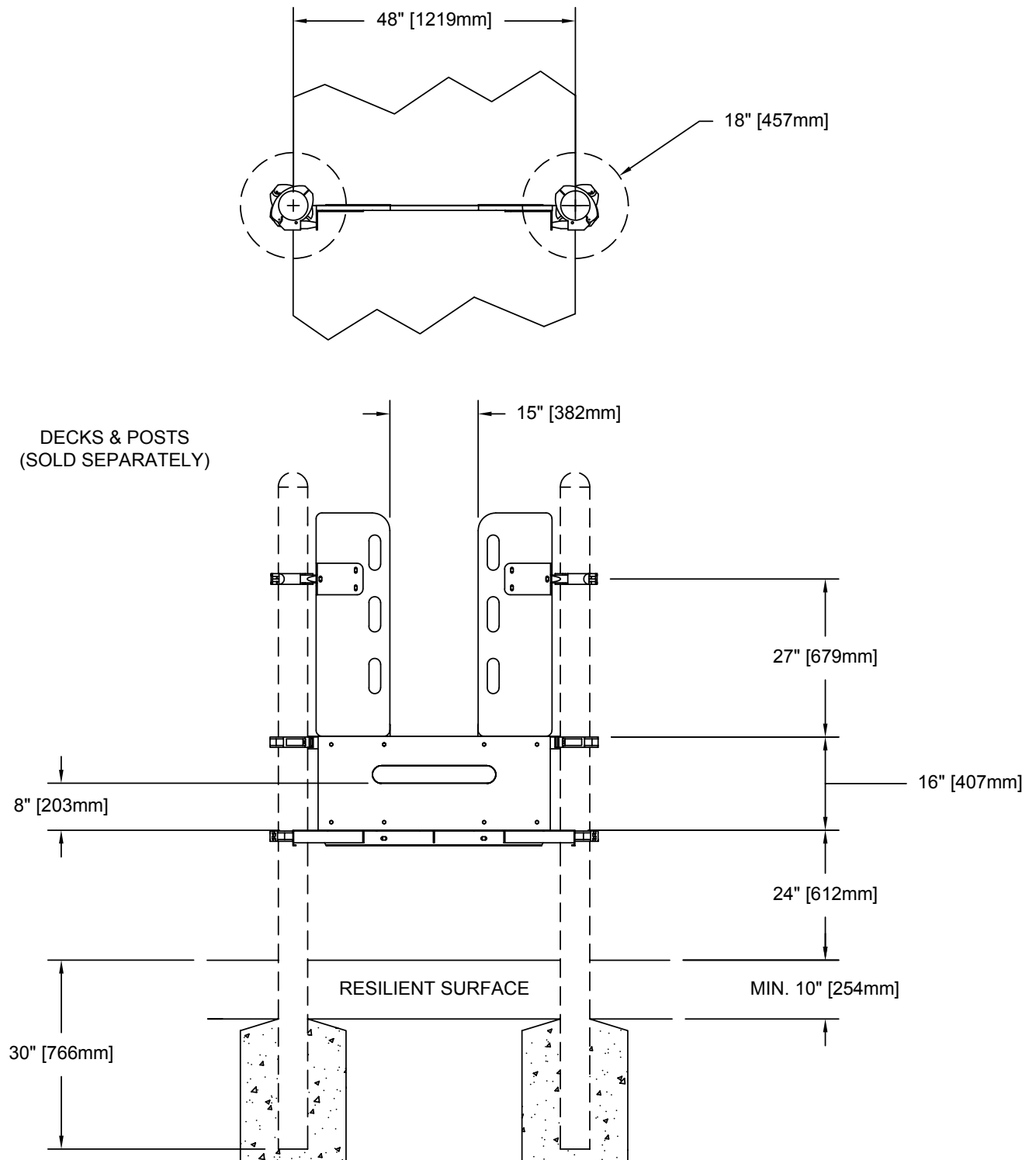
MODEL NO. 60026 Supermax Vertical Ladder

4. When the structure is finished and satisfactory, install Drive Rivets in all clamps to ensure clamps cannot slide down posts. See a Deck Clamp subassembly sheet. **It is very important that all Drive Rivets be installed prior to allowing use of the equipment, as clamps are not designed to support substantial weight without them.** Eliminate sharp points and sharp edges (burring) on installed hardware like bolt, nuts, etc. Install resilient surfacing material under and around all equipment before allowing use. Refer to the *Safety Guidelines*.
Note: To cushion accidental falls by children, **Park structures**, strongly recommends that the area under and around the play structure must be covered with a resilient material, such as sand, mulch, etc., to a minimum depth of 10" for sand. Approved rubber safety matting can also be used. For details, please refer to your Safety Guidelines, provided within the assembly instruction packet.

MAINTENANCE PROCEDURE:

Periodically check hardware for tightness, and tighten as necessary. Always check all parts for breakage or wear, and immediately put equipment out of service until any faulty parts are repaired or replaced. Check all decks for Plastisol-coating peeling and touch-up with Plastisol if necessary. Check for holes on deck, clean if necessary. Check periodically resilient surfacing for appropriate depth and remove extraneous materials that could cause injury, infection, or disease. Maintain detailed installation, inspection, maintenance, and repair records for each public-use playground equipment.

MODEL NO. 60026 Supermax Vertical Ladder



MODEL NO. 60026 Supermax Vertical Ladder

