

MODEL NO. 60061 Small Kickplate (For Deck Spaced 8" Apart)

PARTS LIST

DESCRIPTION	No. REQ'D	PART NUMBER
Small Kickplate	1	300111
Hardware Complete	1	302411
3/8" Flat Washer	8	817410*
3/8" x 1" P.B.H.C.S.	8	812050*
3/8" Lock Nut	8	804353*
3/8" Flat Washer (1 1/4" O.D.)	8	817424*

*Unless Otherwise Specified, All Units of Measure are Each
* Included in Hardware*

Warning: Small parts and hardware items may present a potential choking hazard. Promptly remove all unused parts from play area.

SPECIFICATIONS:

Kickplate measures 9-1/2" x 38" and is cut from 16-gauge galvanized sheet metal with eight (8) 7/16" x 1" slotted holes punched to coincide with deck flange holes and plastisol-coated after fabrication.

All hardware is stainless steel.

Weight: 8 lb. / 3.6 kg

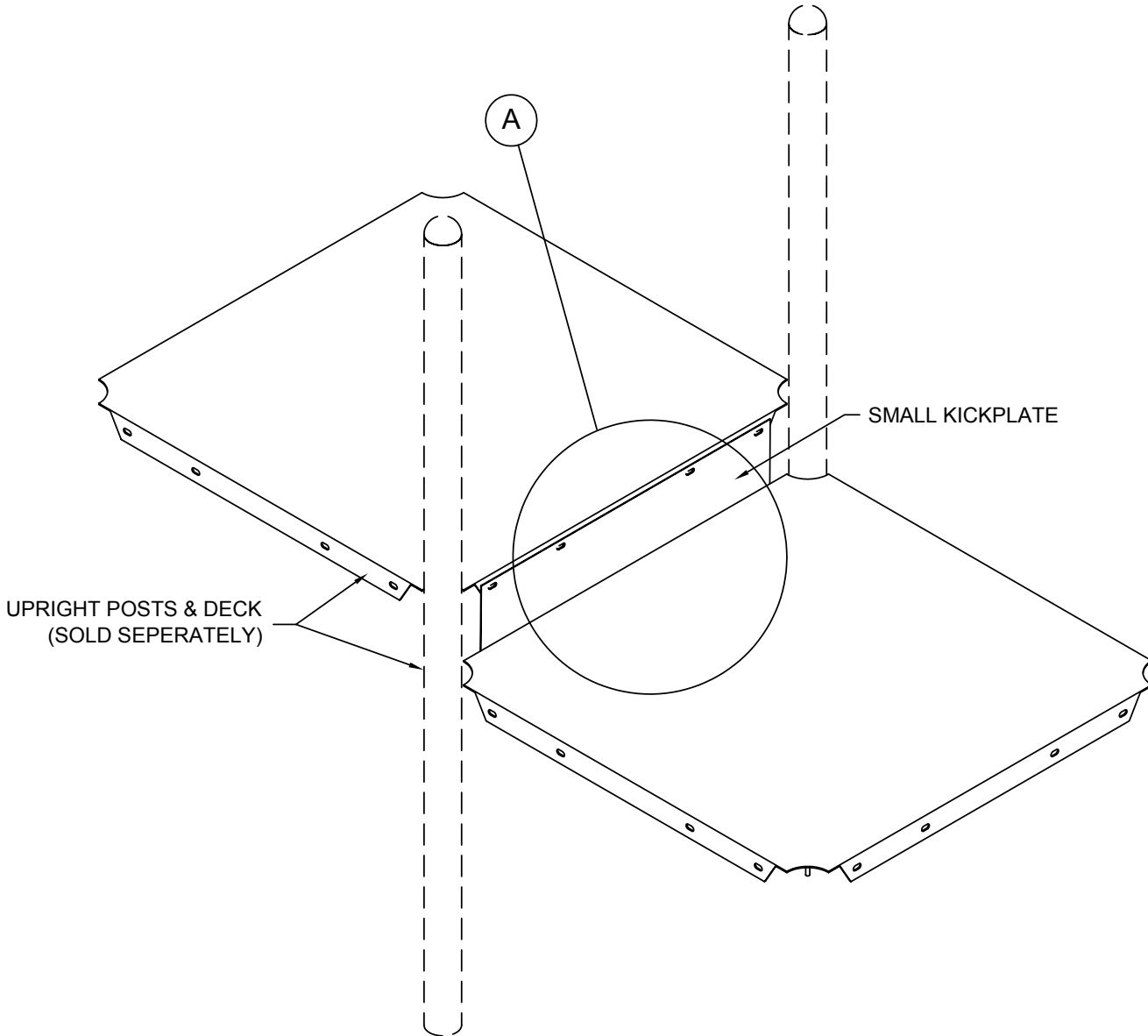
INSTALLATION INSTRUCTIONS:

1. Refer to the main drawing to locate decks, which are spaced 8" apart. These will require Kickplate(s). Attach Kickplates after decks have been installed, but before deck clamps have been pinned, in case adjustment in deck heights is required to match up holes in deck flanges with holes in Kickplate.
2. Fasten the Kickplate between decks as shown in the drawing. No portion of the Kickplate should be protruding in a manner that could cause a user to receive a cut, scrape or trip over an edge. Any rough edges should be filed smooth, and any protruding corners should be flattened. Eliminate sharp points and sharp edges (burring) on installed hardware like bolts, nuts, etc.

MAINTENANCE PROCEDURE:

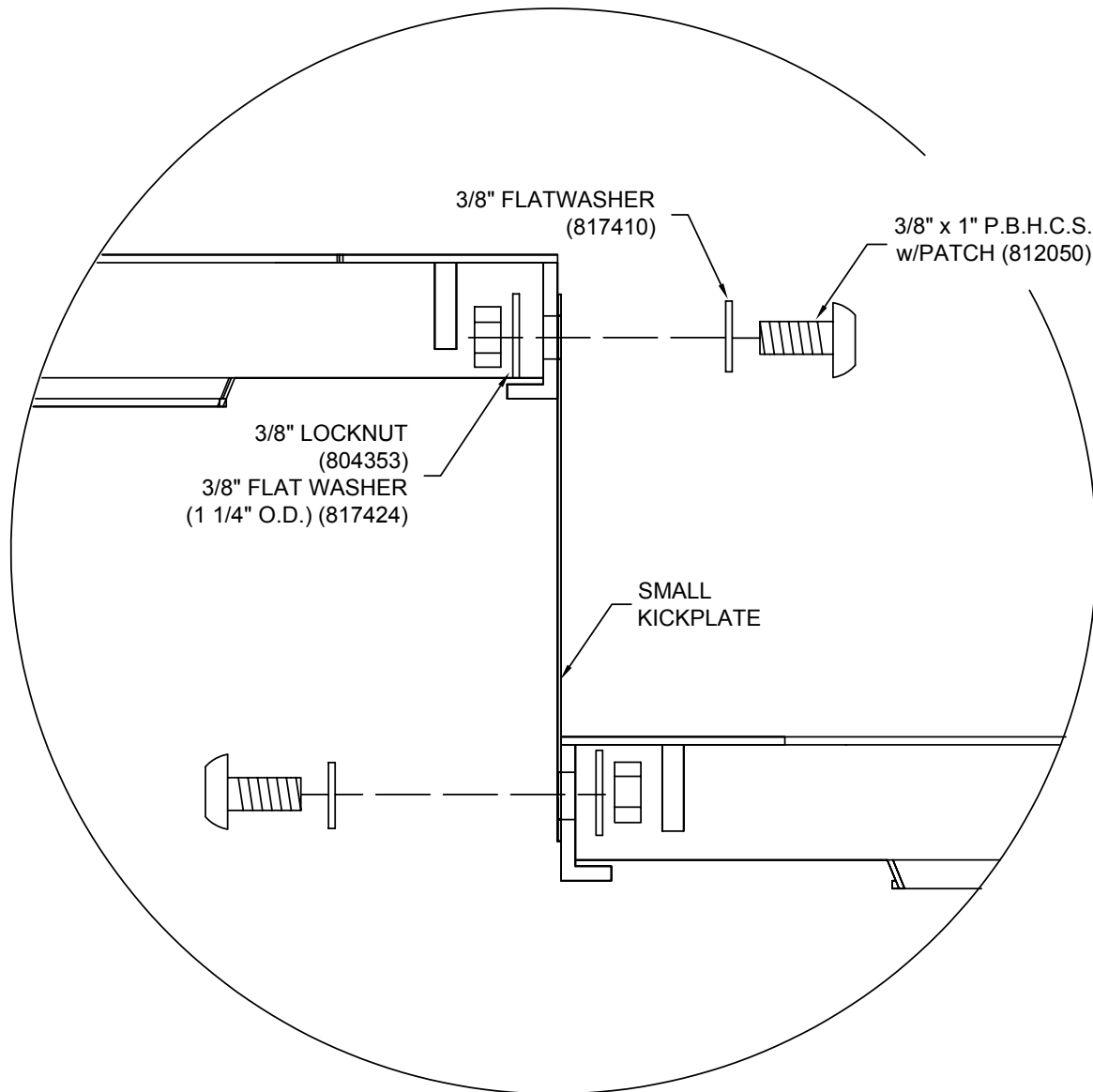
Periodically check hardware for tightness, and tighten as necessary. Always check all parts for breakage or wear, and immediately put equipment out of service until any faulty parts found are repaired or replaced. Also Check all metal parts for rust, paint loss and touch-up if necessary with paint. Check for welded areas and verify integrity. Check Plastisol-coating for bare spots and touch-up with Plastisol if necessary. Clear any trapped debris from deck perforations. Check periodically resilient surfacing for appropriate depth and remove extraneous materials that could cause injury, infection, or disease. Maintain detailed installation, inspection, maintenance, and repair records for each public-use playground equipment.

MODEL NO. 60061 Small Kickplate (For Deck Spaced 8" Apart)



FINISHED ASSEMBLY

MODEL NO. 60061 Small Kickplate (For Deck Spaced 8" Apart)



DETAIL "A"