

## MODEL NO. 60081 Flush Mount Semi-Hex & Square Decks

### PARTS LIST

| DESCRIPTION                      | No. REQ'D | PART NUMBER |
|----------------------------------|-----------|-------------|
| Square Deck Platform             | 2         | 300213      |
| Semi-Hex Platform                | 2         | 300185      |
| Universal Deck Center Support    | 2         | 305825      |
| <b>Hardware Complete</b>         | 1         | 302614      |
| 5" O.D. Deck Clamp               | 8         | 301989*     |
| 1/4" x 3/4" Drive Rivet          | 8         | 168449*     |
| 3/8" Barrel Nut                  | 8         | 804804*     |
| 3/8" Flat Washer                 | 2         | 817410*     |
| 3/8" Heavy Hex Nut               | 8         | 804200*     |
| 3/8" x 1 1/2" P.B.H.C.S. w/Patch | 8         | 812053*     |
| 3/8" x 3/4" P.B.H.C.S. w/Patch   | 10        | 812052*     |
| 3/8" Lock Nut                    | 2         | 804353*     |
| 3/8" Flat Washer (1 1/4" O.D.)   | 10        | 817424*     |
| 3/8" Lock Washer                 | 10        | 817334*     |
| 3/8" Tee Nut                     | 10        | 804556*     |

**Unless Otherwise Specified, All Units of Measure are Each  
\*Included in Hardware**

**Warning: Small parts and hardware items may present a potential choking hazard. Promptly remove all unused parts from play area. Any bolt end protruding more than two full threads beyond the face of the nut causes risk of clothing entanglement. Promptly cut-off flush, file smooth, and treat to prevent corrosion.**

**Note: Peen Tee-Nuts and Flatwashers to match radius of pipe after assembly is complete.**

**Note: Loctite (supplied by others) should be used on any non-patch hardware.**

### SPECIFICATIONS:

Clamps are cast from a 356 high-strength aluminum alloy with a baked on polyester powder-coated finish. Deck is fabricated from pre-punched steel sheet with steel flat support bars welded underneath to increase strength. After welding, the entire platform is Plastisol-coated with a minimum thickness of 80 mils. Center Post is fabricated from 3/8" flat steel that is stainless steel welded to 2-3/8" O.D. galvanized steel tubing. Center Post receives a baked-on polyester powder-coated finish after fabrication.

Primary hardware is stainless steel.

Weight: 666 lb. / 302.7 kg.

### INSTALLATION INSTRUCTIONS:

1. Dig Footings as shown in assembly diagram. Refer to your overhead drawing for location. Place Posts and Center Post in dug holes at appropriate height per Post installation instructions. Mark each Post at required Deck height as shown in the assembly diagram. (Note: Center post provided is for a 8' deck height, for lower deck heights cut corresponding amount from bottom of post. For example, a 5' deck height will require 36" removed from post.)
2. Attach a Deck Clamp to one corner bolt on first Deck and fasten using 3/8" Barrel Nut as shown in Detail "A". Do not tighten.

HINT: Locate and concrete one post only (preferably the most shared post), ensuring it is plumb and level at the right height. After it has had a chance to set, place one corner of the first Deck with its Deck Clamp attached against the post and mark the location of the adjacent post. Concrete the second post with a Deck Clamp attached. Continue this procedure for all remaining posts while leaving the Deck on the ground. The deck has been used as its own template, and the Decks are now easily attached as two of its posts are already in place.

## MODEL NO. 60081 Flush Mount Semi-Hex & Square Decks

3. Raise Deck with Deck Clamps to marks previously made on Posts, making sure to attach one corner to Center Post using 3/8" Lock Nuts with 3/8" Flat Washers as shown in Detail "B". Slightly tighten Clamps using 3/8" x 1-1/2" P.B.H.C.S. w/Patch with 3/8" Heavy Hex Nuts as shown.

**NOTE:** Where Decks are to join, ensure that one Clamp is turned so as to provide attachment for the other Deck(s). In order for the decks to be flush with the top of the Deck Clamps, bolts will have to be removed from under the decks in areas that conflict with the placement of the Deck Clamps.

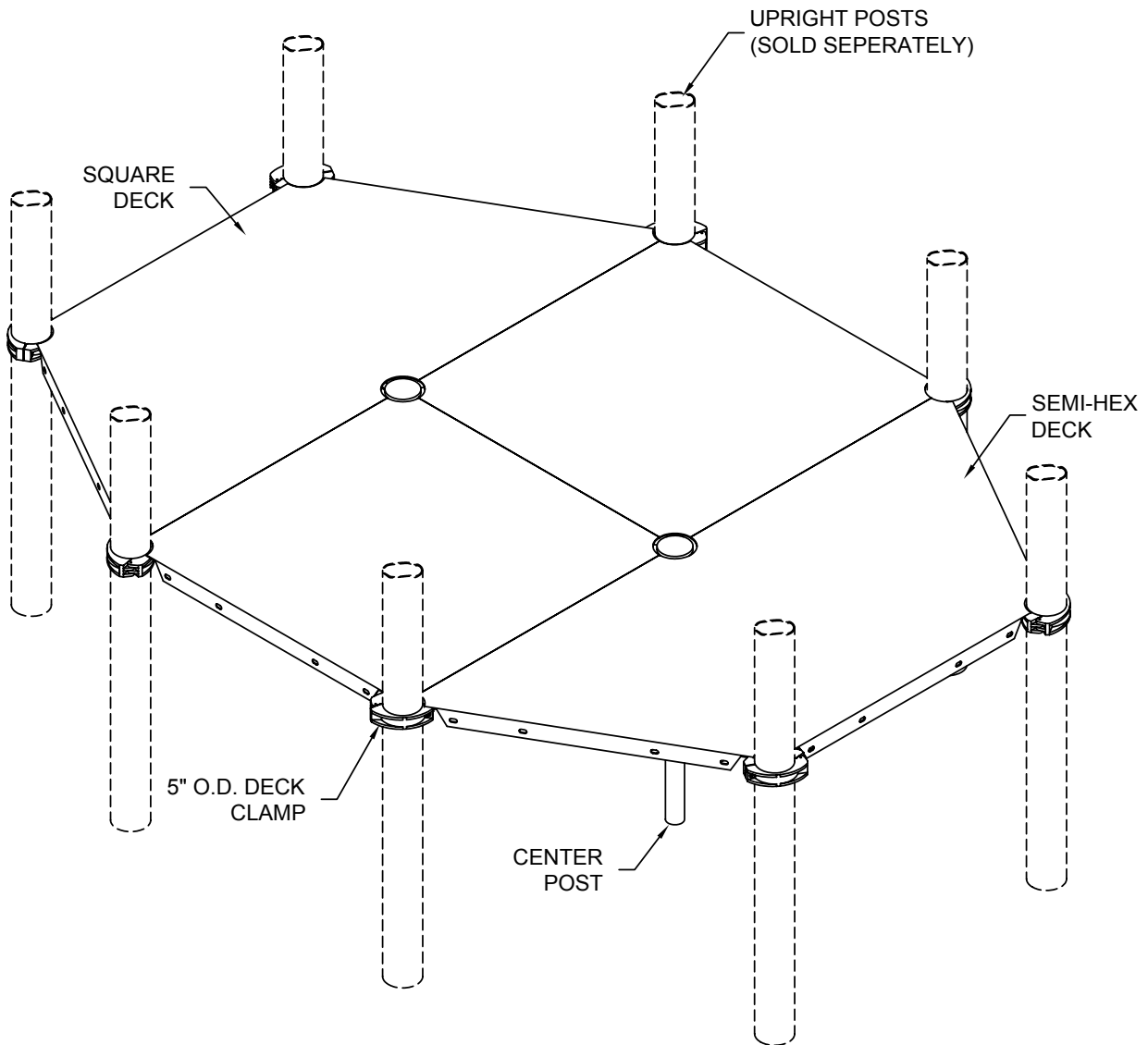
4. Using a level, and holding one Clamp as a constant, adjust the other Clamps so that the Deck is completely level. Plumb and brace Clamps in position.
5. Repeat steps 1-4 for the remaining Decks making sure that each deck is provided with at least three support points (including support point at Center Post). Attach Decks together at matching flanges using 3/8" x 3/4" P.B.H.C.S. w/Patch, 3/8" Flat Washers (1 1/4" O.D.), and 3/8" Lock Washers to 3/8" Tee Nuts as shown in the assembly drawing. (See Detail, Note: Typical 2 per side.) Saw off all unused corner bolts. Do Not Tighten.
6. Fully tighten all Deck Clamps and fasteners. Pour concrete footings within 4" to the top and taper away from posts to allow water drainage. Allow to cure at least 48 hours before use.
7. When structure is finished and satisfactory, install Drive Rivets in all Clamps to ensure Clamps cannot slide down Posts. See Deck Clamp sub-assembly sheet. Eliminate sharp points and sharp edges (burring) on installed hardware like bolts, nuts, etc. **It is very important that all Drive Rivets be installed prior to allowing use of the equipment, as Clamps are not designed to support substantial weight without them.** Install resilient surfacing material within the use zone of play structure in accordance with ASTM specifications F1292 appropriate for the fall height of each structure. Refer to the Safety Guidelines

**Note:** To cushion accidental falls by children, **Park Structures**, Inc. strongly recommends that the area under and around the play structure must be covered with a resilient material, such as sand, mulch, etc., to a minimum depth of 10" for sand. Approved rubber safety matting can also be used. For details, please refer to your Safety Guidelines, provided within the assembly instruction packet.

### **MAINTENANCE PROCEDURE:**

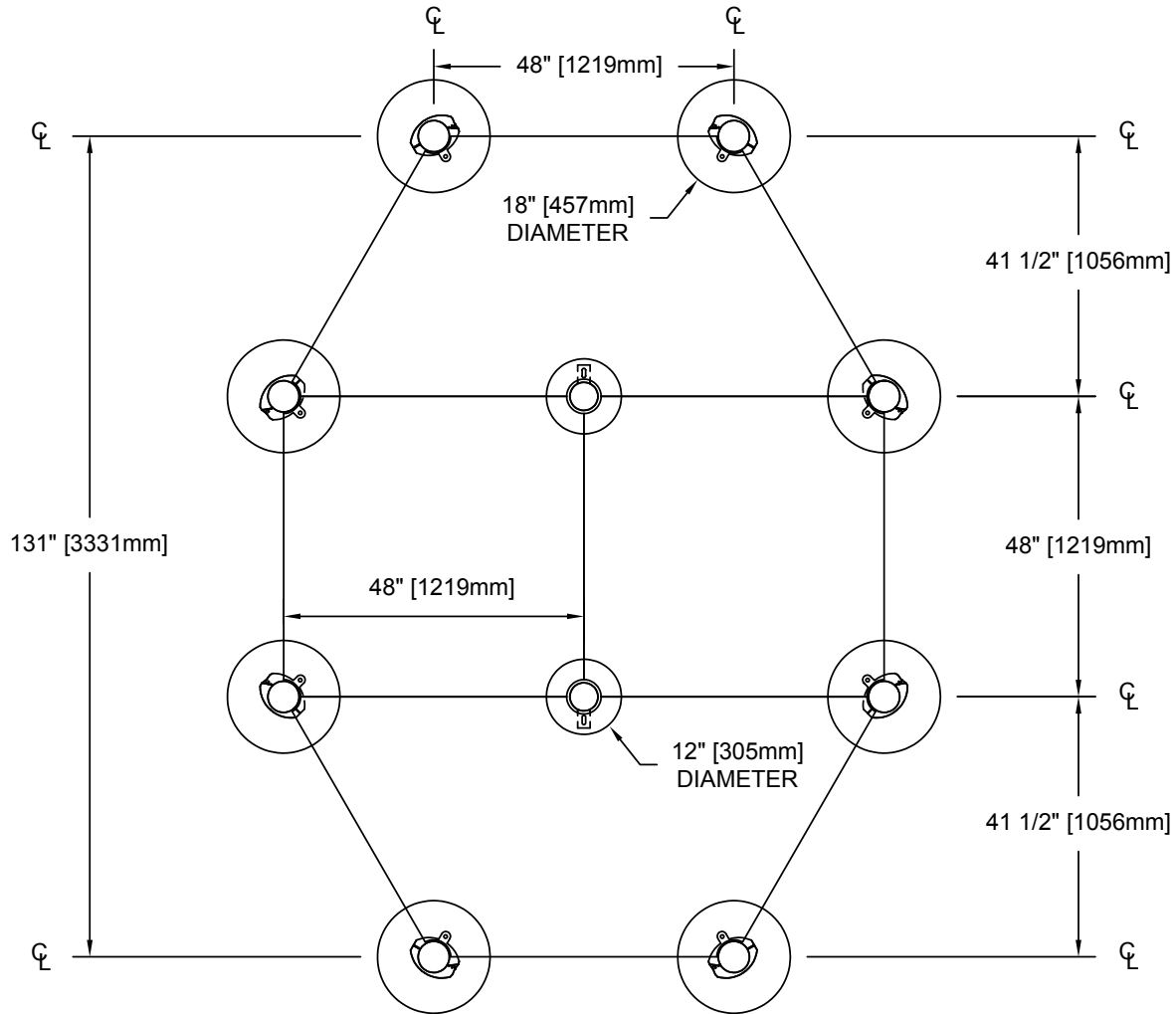
Periodically check hardware for tightness, and tighten as necessary. Always check all parts for breakage or wear, and immediately put equipment out of service until any faulty parts found are repaired or replaced. Check for rust or paint loss and touch-up if necessary with paint. Check welded areas and verify integrity. Check Plastisol-coating for bare spots and touch-up with Plastisol if necessary. Clear any trapped debris from deck perforations. Check periodically resilient surfacing for appropriate depth and remove extraneous materials that could cause injury, infection, or disease. Maintain detailed installation, inspection, maintenance, and repair records for each public-use playground equipment.

## MODEL NO. 60081 Flush Mount Semi-Hex & Square Decks

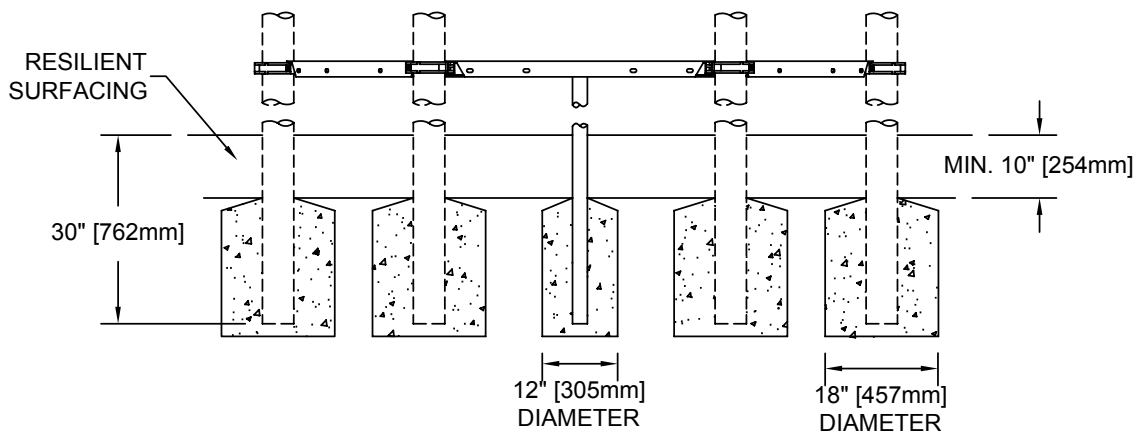


FINISHED ASSEMBLY

## MODEL NO. 60081 Flush Mount Semi-Hex & Square Decks

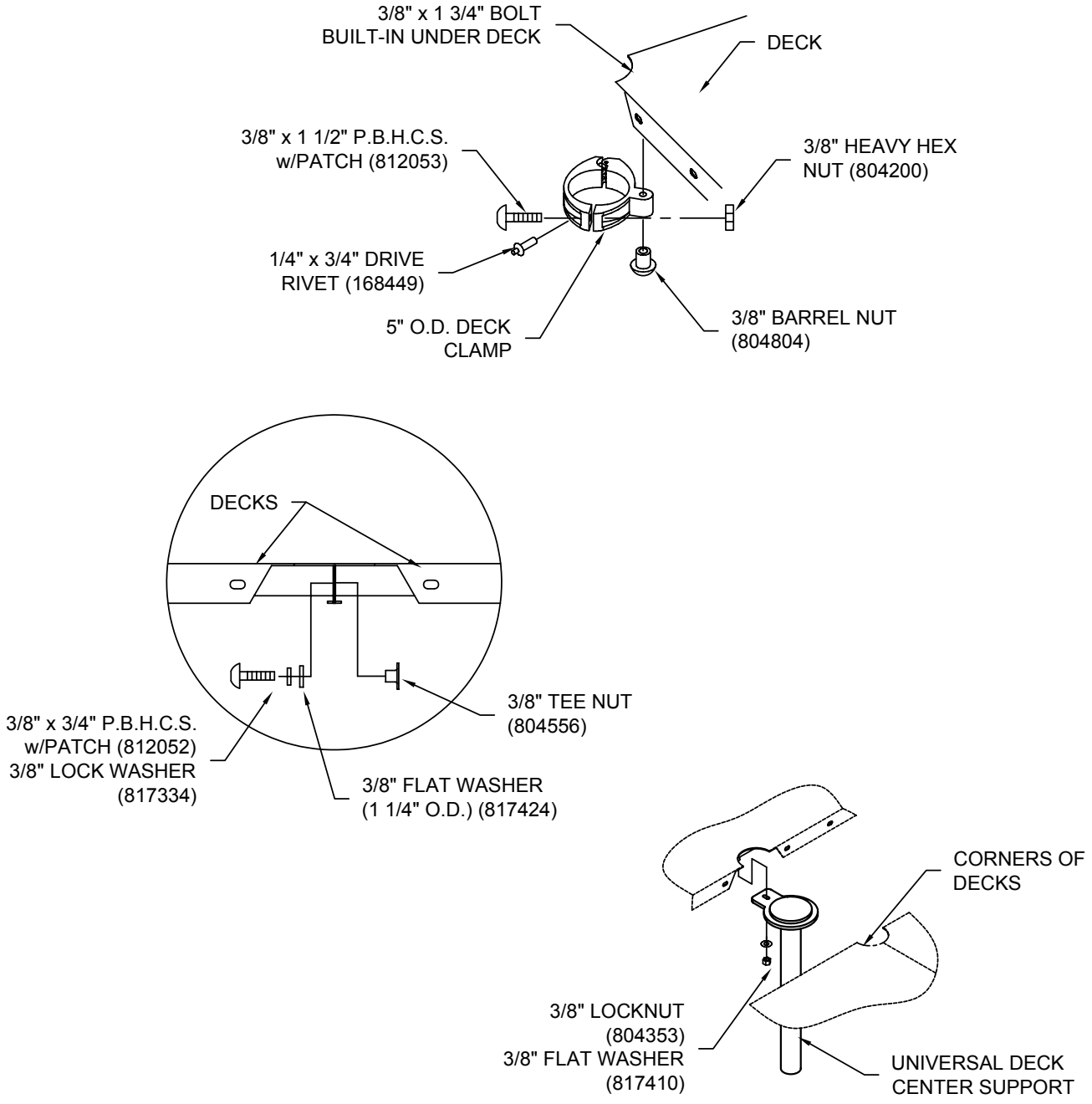


PLAN VIEW



ELEVATION VIEW

## MODEL NO. 60081 Flush Mount Semi-Hex & Square Decks



### SEMI-HEX & SQUARE DECKS ASSEMBLY