

MODEL NO. 60133 Climbing Wall w/ Ring

PARTS LIST

DESCRIPTION	No. REQ'D	PART NUMBER
Climbing Wall Panel	1	303121
Top Filler Panel	1	302784
Semi-Circle Ring	2	303090
Panel Side Bracket	2	302445
Hardware Complete	1	303054
5" O.D. Pipe Clamp	4	302030*
1/4" x 3/4" Drive Rivet	4	168449*
3/8" Barrel Nut	16	804804*
3/8" Flat Washer	24	817410*
3/8" Heavy Hex Nut	4	804200*
3/8" X 1 1/2" P.B.H.C.S. w/ Patch	8	812053*
3/8" X 1 3/4" P.B.H.C.S. w/ Patch	4	812054*
3/8" X 3/4" P.B.H.C.S. w/ Patch	12	812052*
3/8" Lock Nut	4	804353*
3/8" X 3/8" Set Screw	4	811549*

*Unless Otherwise Specified, All Units of Measure are Each
* Included in Hardware*

Warning: Small parts and hardware items may present a potential choking hazard. Promptly remove all unused parts from play area.

SPECIFICATIONS:

Clamps are cast from a 356 high strength aluminum alloy with a baked on polyester powder-coated finish. Panel Side Brackets are fabricated from 3/16" x 60" steel angle, 1" x 1" x 60" galvanized square tubing and 1-5/16" O.D. 14-gauge galvanized steel tubing welded for attachment. All brackets are powder coated. Semi-Circle Ring is fabricated from 1-5/16" O.D. 14-gauge galvanized steel tubing with 3/16" thick galvanized plate welded for attachment. All parts are stainless steel welded and polyester powder-coated after fabrication. Panels are cut from a single sheet of high-density .850" thick extruded solid polyethylene with color molded in and UV-stabilized.

All hardware is stainless steel.

Weight: 137 lb. / 62.3 kg

INSTALLATION INSTRUCTIONS:

1. Dig footings at locations shown in Elevation View. Place Upright Posts into footings and brace in position.
2. Attach Climbing Wall Top Filler Panel, Semi-Circle Rings and Panel Side Bracket Extended-60" to Climbing Wall Panel using 3/8" x 1-1/2" and 3/8" x 3/4" P.B.H.C.S. w/ Patch, 3/8" x 1-3/4" P.B.H.C.S. w/ Patch with 3/8" Flat Washers, 3/8" Barrel Nuts and 3/8" Lock Nuts as shown in the assembly diagram. Tighten fasteners loosely. Attach the assembly to Upright Posts using Pipe Clamps. See Pipe Clamp sub-assembly for detail.
3. Plumb and level the entire assembly and brace in position. Tighten all fasteners.
4. Pour concrete footings within 4" to the top and taper away from posts to allow water drainage. Allow to cure at least 48 hours before use.

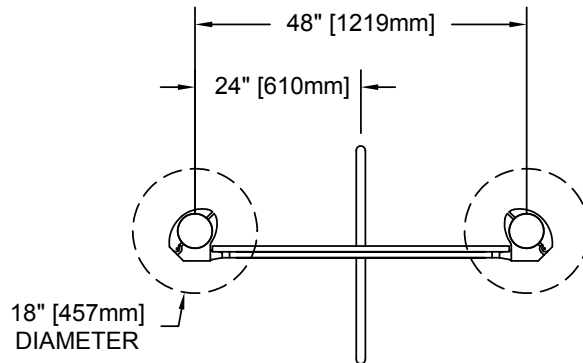
MODEL NO. 60133 Climbing Wall w/ Ring

- When the structure is finished and satisfactory, install Drive Rivets to all Clamps to ensure clamps cannot slide down posts. See Pipe Clamps sub-assembly sheet. **It is very important that all Drive Rivets be installed prior to allowing use of equipment, as clamps are not designed to support substantial weight without them.** Also eliminate sharp points and sharp edges (burring) on installed hardware like bolts, nuts, etc. Install resilient surfacing material within the *use zone* of play structure in accordance with ASTM specifications F1292 appropriate for the fall height of each structure. Refer to the *Safety Guidelines*.

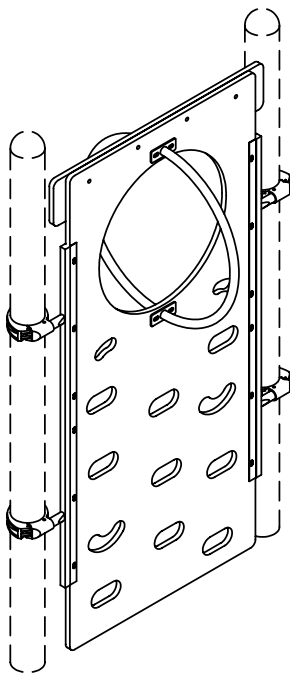
MAINTENANCE PROCEDURE:

Periodically check hardware for tightness, and tighten as necessary. Always check all parts for breakage or wear, and immediately put equipment out of service until any faulty parts are repaired or replaced. Check all decks for Plastisol-coating peeling and touch-up with Plastisol if necessary. Check for holes on deck, clean if necessary. Check periodically resilient surfacing for appropriate depth and remove extraneous materials that could cause injury, infection, or disease. Maintain detailed installation, inspection, maintenance, and repair records for each public-use playground equipment.

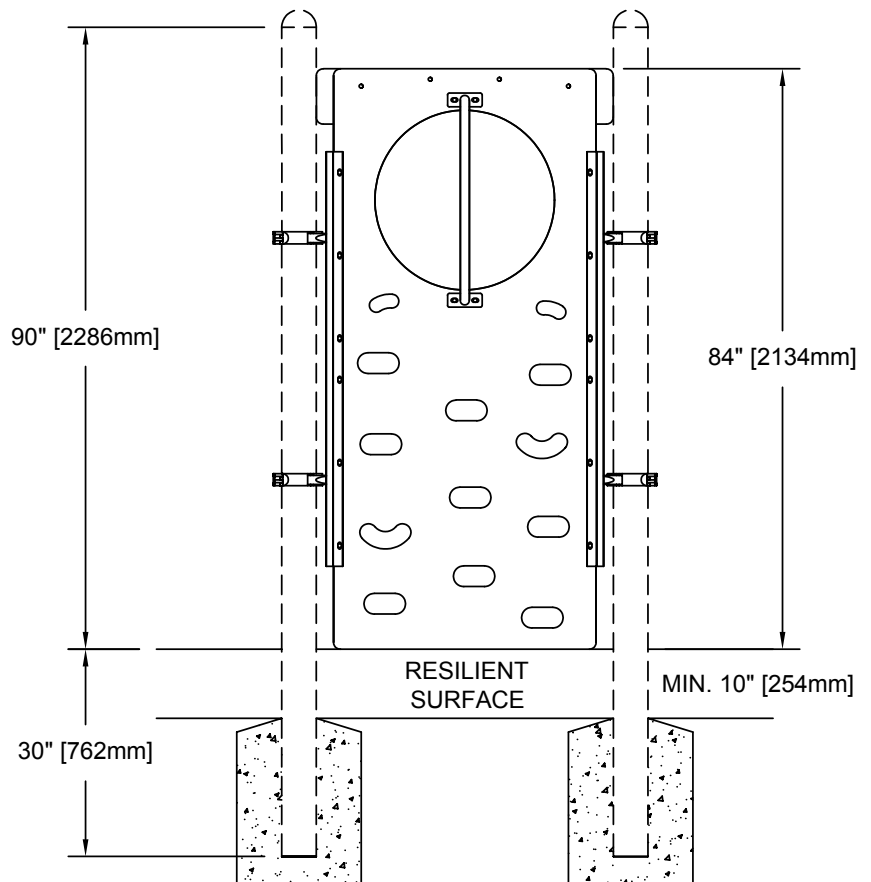
MODEL NO. 60133 Climbing Wall w/ Ring



PLAN VIEW



FINISHED ASSEMBLY



ELEVATION VIEW

MODEL NO. 60133 Climbing Wall w/ Ring

