

MODEL NO. 60135 No-Deck Coil Climber (58" Wide)

PARTS LIST

DESCRIPTION	No. REQ'D	PART NUMBER
Coil Climber	1	302819
Top Beam	1	303077
Hardware Complete	1	303062
5" O.D. Half Clamp	4	301001*
1/4" x 3/4" Drive Rivet	6	168449*
3/8" Barrel Nut	1	804804*
3/8" Flat Washer	17	817410*
3/8" Lock Nut	8	804353*
3/8" x 1 1/4" P.B.H.C.S. w/ Patch	9	812051*

**Unless Otherwise Specified, All Units of Measure are Each
*Included in Hardware**

Warning: Small parts and hardware items may present a potential choking hazard. Promptly remove all unused parts from play area.

SPECIFICATIONS:

Clamps are cast from a 356 high-strength aluminum alloy with a baked-on polyester powder-coated finish. Coil Climber consists of a 1-5/8" O.D. 14-gauge galvanized steel center tube with a 1-5/16" reduced end fitting for insertion into top Beam. The coil is fabricated from a continuous 1-5/16" O.D. 12-gauge galvanized steel tube coiled to form a 10" diameter with maximum 11" clear spacing between each turn. Each open end of coiled tubing is welded shut, and the entire coiled tubing is welded to the 1-5/8" O.D. center pole at intervals using 1" O.D. galvanized tubing for connections. Coil Climber Top Beam is fabricated from 2-3/8" O.D. 10-gauge with stainless steel welded half-clamp at each end for attachment. All metal parts receive a baked on polyester powder-coated finish after fabrication.

All hardware is stainless steel.

Weight: 139 lb. / 63.2 kg

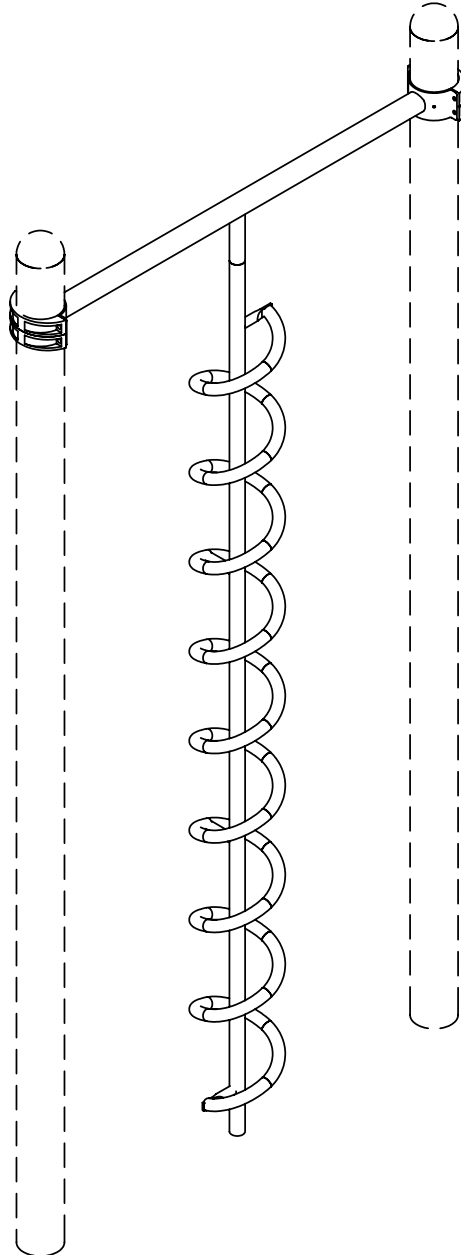
INSTALLATION INSTRUCTIONS:

- Determine the location of Coil Climber and dig the footings as shown in the Plan View. Refer to your overhead drawing for location.
- Attach Coil Climber Frame to Top Beam using 3/8" x 1-1/4" P.B.H.C.S. with Patch with 3/8" Flat Washer and 3/8" Barrel Nut as shown. Attach the assembly to Upright Posts using 3/8" x 1-1/4" P.B.H.C.S. with Patch with 3/8" Flat Washers and 3/8" Lock Nut with 3/8" Flat Washers as shown in the assembly diagram.
- When the Coil Climber is plumb and level, tighten all fasteners and pour concrete footings within 4" to the top and taper away from posts to allow water drainage. Allow curing at least 48 hours before use.
- When the assembly is finished and satisfactory, install Drive Rivets in all clamps to ensure clamps cannot slide down posts. Also eliminate sharp points and sharp edges (burring) on installed hardware like bolts, nuts, etc. See Pipe Clamp sub-assembly sheet. **It is very important that all Drive Rivets be installed before allowing use of the equipment, as clamps are not designed to support substantial weight without them.** Install resilient surfacing material within the use zone of play structure in accordance with ASTM specifications F1292 appropriate for the fall height of each structure. Refer to the Safety Guidelines.

MAINTENANCE PROCEDURE:

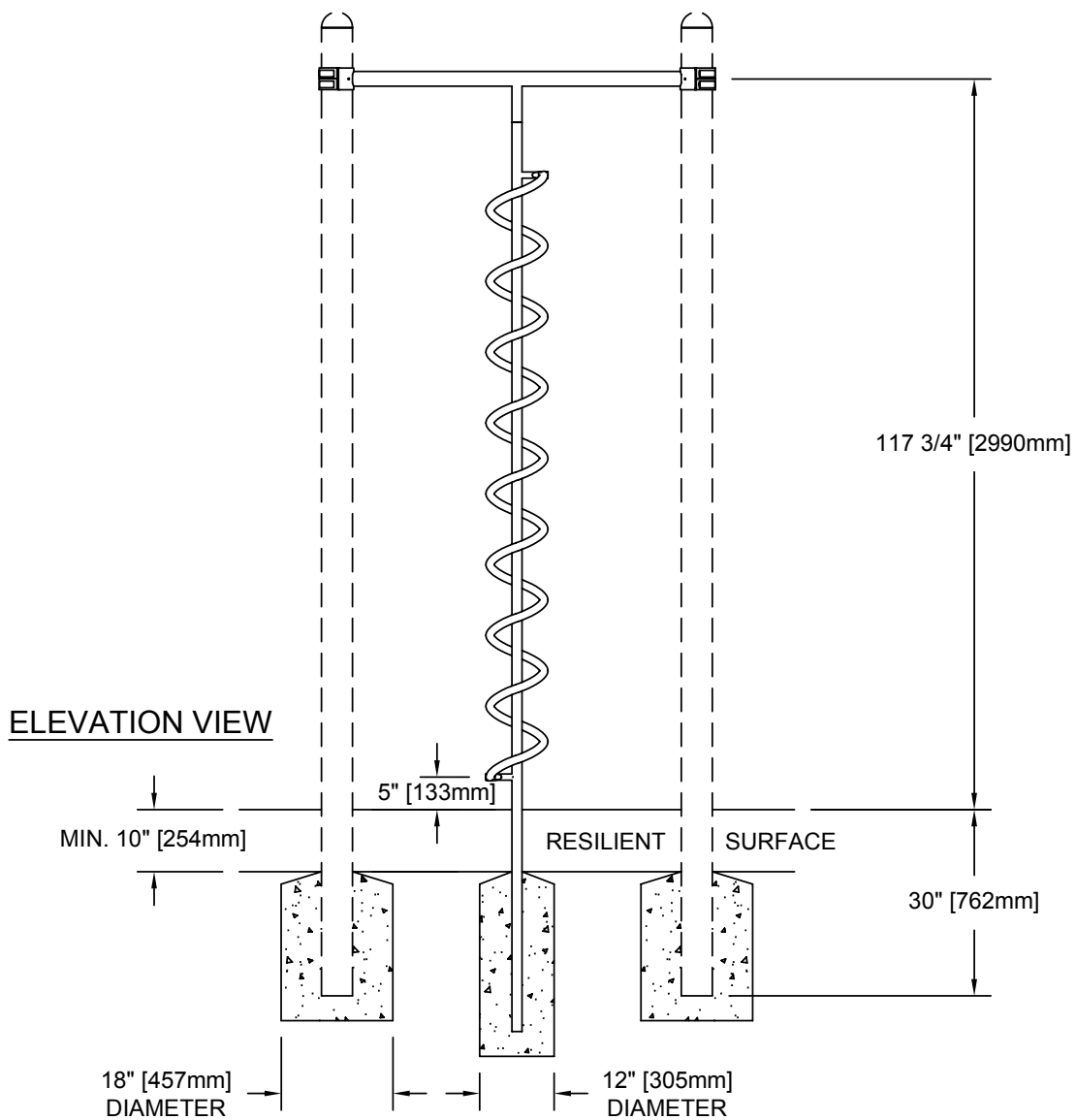
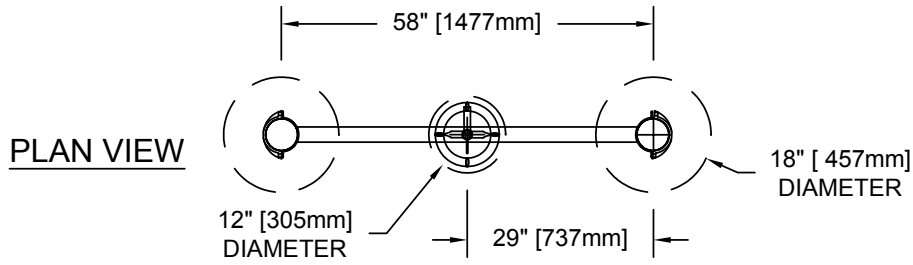
Periodically check hardware for tightness, and tighten as necessary. Always check all parts for breakage or wear, and immediately put equipment out of service until any faulty parts found are repaired or replaced. Also Check all metal parts for rust, paint loss and touch-up if necessary with paint. Check for welded areas and verify integrity. Check periodically resilient surfacing for appropriate depth and remove extraneous materials that could cause injury, infection, or disease. Maintain detailed installation, inspection, maintenance, and repair records for each public-use playground equipment.

MODEL NO. 60135 No-Deck Coil Climber (58" Wide)



FINISHED ASSEMBLY

MODEL NO. 60135 No-Deck Coil Climber (58" Wide)



MODEL NO. 60135 No-Deck Coil Climber (58" Wide)

