

MODEL NO. 60144 Swivel Station (1'-4", 2'-0", 2'-8" Decks)

PARTS LIST

DESCRIPTION	No. REQ'D	PART NUMBER
Horizontal Beam	1	303150
Play Wheel	4	301783
Hardware Complete	1	303123
Half Clamp	4	301124*
5" O.D. Pipe Clamp	4	302030*
1/4" x 3/4" Drive Rivet	4	168449*
3/8" Flat Washer	32	817410*
3/8" Heavy Hex Nut	4	804200*
3/8" X 1 1/2" P.B.H.C.S. w/ Patch	20	812053*
3/8" Lock Nut	16	804353*
3/8" x 3/8" Set Screw	4	811549*

*Unless Otherwise Specified, All Units of Measure are Each
Included in Hardware

Warning: Small parts and hardware items may present a potential choking hazard. Promptly remove all unused parts from play area. Any bolt end protruding more than two full threads beyond the face of the nut causes risk of clothing entanglement. Promptly cut-off flush, file smooth, and treat to prevent corrosion.

Note: Peen Tee-Nuts and Flatwashers to match radius of pipe after assembly is complete.

SPECIFICATIONS:

Horizontal Beam is made of 3-1/2" O.D. 13-gauge galvanized steel tubing and 1-5/16" O.D. 14-gauge galvanized steel tubing. All welding is steel. Play-Wheels consist of 3/4" O.D. tubing, spokes are made of 1/2" rod and reinforced with a 1/8" steel plates, free turning with a grease impregnated bronzed bushing press-fit into the shaft to provide smooth turning. 3-1/2" Steel Wide Half-Clamps are formed from a 3/16" thick steel plate. All parts are polyester powder-coated finished after fabrication.

Primary hardware is stainless steel.

Weight: 81 lb. / 36.8 kg

INSTALLATION INSTRUCTIONS:

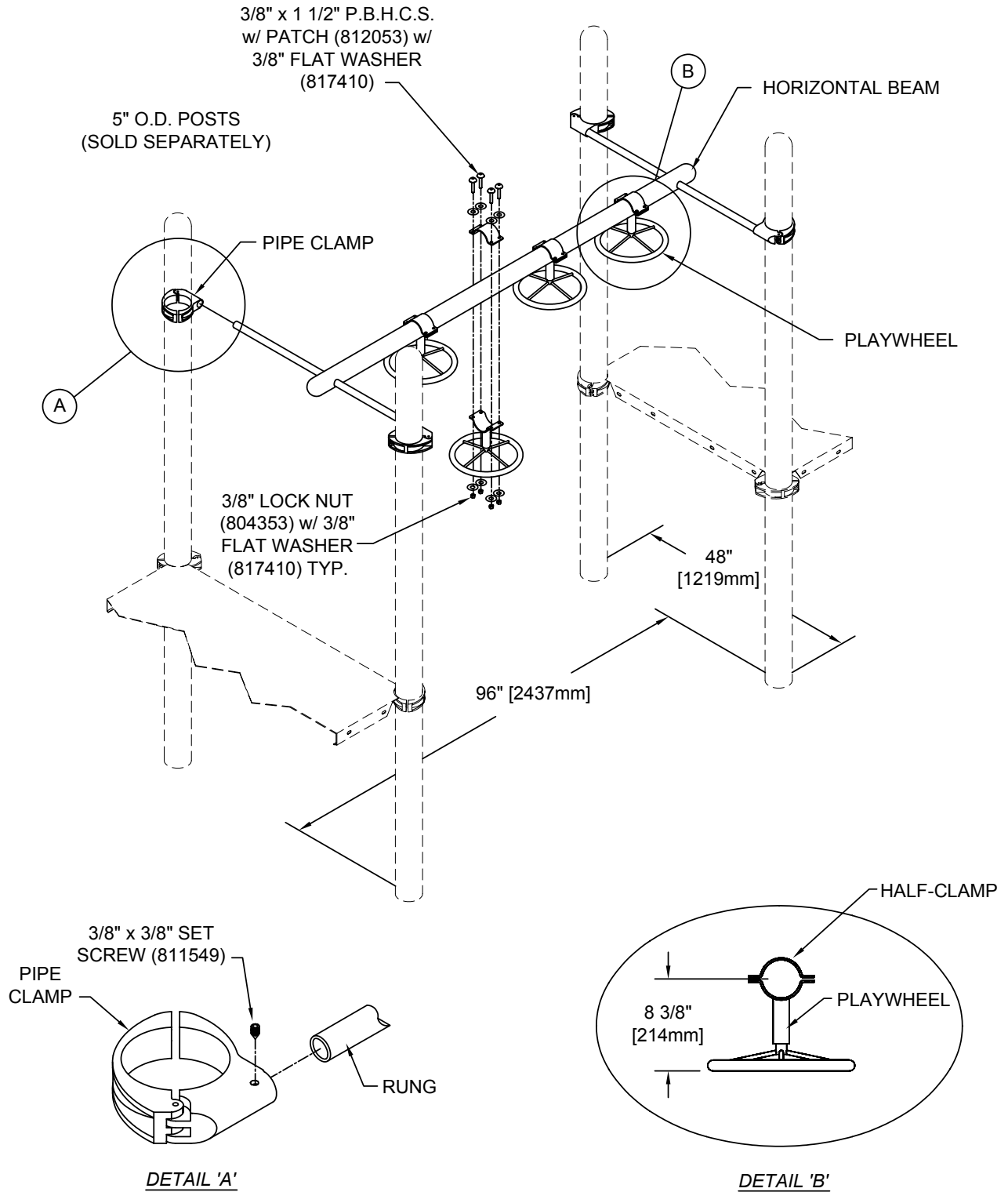
1. Locate the four Upright Posts intended to receive the Swivel Station by referring to your overhead drawing for location. They should be spaced 8' apart lengthwise and 4' apart widthwise.
2. Mark tops of the four Upright Posts selected to receive the Beam at approximately 66" to 84" above finished ground level. Attach a Pipe Clamp over each 49" Rung end on the Beam, and clamp onto posts at marks. Slightly tighten Pipe Clamps.
3. Attach the Play-Wheels to Horizontal Beam using 3/8" x 1-1/2" P.B.H.C.S. w/ Patch with 3/8" flat washers and 3/8" Lock Nuts as shown in the assembly diagram.
4. Once the entire play structure is assembled, and all Posts have been properly braced, level and plumb. Pour concrete within 4" to the top. Be sure to taper concrete away from Posts as shown on assembly diagram to facilitate good water drainage.
5. When the structure is finished and satisfactory, install Drive Rivets on all clamps to ensure clamps cannot slide down posts. See Pipe Clamp sub-assembly sheet. ***It is very important that all Drive Rivets be installed prior to allowing use of the equipment, as clamps are not designed to support substantial weight without them.*** Install resilient surfacing material within the *use zone* of play structure in accordance with ASTM specifications F1292 appropriate for the fall height of each structure. Refer to the *Safety Guidelines*.

NOTE: Loctite (supplied by others) should be used on any non-patch hardware.

MAINTENANCE PROCEDURE:

Periodically check hardware for tightness, and tighten as necessary. Always check all parts for breakage or wear, and immediately put equipment out of service until any faulty parts are repaired or replaced. Check all decks for Plastisol-coating peeling and touch-up with Plastisol if necessary. Check for holes on deck, clean if necessary. Check periodically resilient surfacing for appropriate depth and remove extraneous materials that could cause injury, infection, or disease. Maintain detailed installation, inspection, maintenance, and repair records for each public-use playground equipment.

MODEL NO. 60144 Swivel Station (1'-4", 2'-0", 2'-8" Decks)



MODEL NO. 60144 Swivel Station (1'-4", 2'-0", 2'-8" Decks)

